

LICON s.r.o.

Heating Cooling **Ventilation**



Quality Function **Design** Tradition

REFERENCES



Central Plaza
Dublin, Ireland



SFU McTaggart Cowan Hall
Burnaby, Canada



Museum Munch
Oslo, Norway



Raiqa
Innsbruck, Austria



Museum HC Andersens
Odense, Denmark



UBS Pleyad, obchodní centrum
Saint-Denis, France



Gemeindezentrum
Lech, Austria



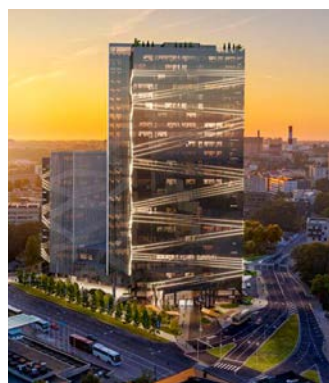
Residence du Lac
Morges, Switzerland



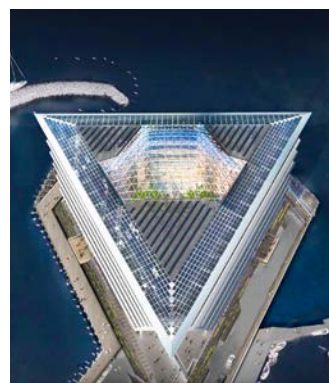
Hanselmayergasse 10-12
Vienna, Austria



Opera House
Copenhagen, Denmark



Quartier Arter
Tallinn, Estonia



Ferring
Copenhagen, Denmark



Landsbankinn
Reykjavik, Iceland



MCBA-Museum
Lausanne, Switzerland



World of Volvo
Gothenburg, Sweden



Osco
Cheongju, South Korea



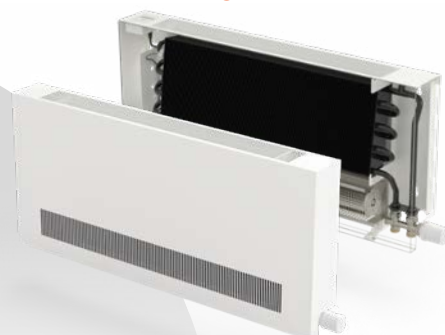
TRENCH HEATERS
KORAFLEX



FREE-STANDING
CONVECTORS
KORALINE



WALL-MOUNTED
CONVECTORS
KORAWALL



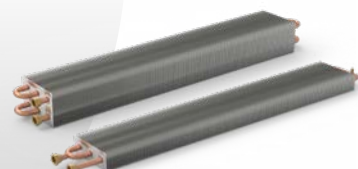
CONVECTORS
WITH FORCED
CONVECTION



CONVECTORS
WITH NATURAL
CONVECTION



FACADE
CONVECTORS
KORASPACE



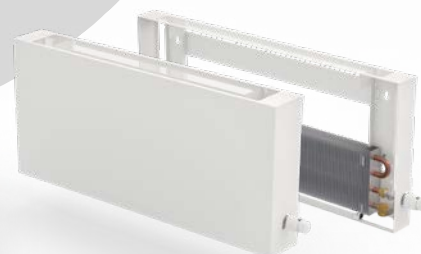
HEAT
EXCHANGERS
KORABASE



TRENCH
HEATERS
KORAFLEX



FREE-STANDING
CONVECTORS
KORALINE



WALL-MOUNTED
CONVECTORS
KORAWALL



CENTRAL HEAT RECOVERY
UNITS **VENTBOX**



Clean and
fresh air



PRODUCT PORTFOLIO

We offer a wide range of products under a single brand, enabling comprehensive solutions for all types of buildings and spaces. These contribute to maximum compatibility, simplicity of design and service, individual solutions and financial savings.

KORADO Group

LICON s.r.o.

A 55-year tradition in the manufacture of convection heaters. A member of the KORADO group since 2013. LICON s.r.o. offers tailor-made projects for every type of building. **LICON s.r.o. insists on using the most modern research and development methods, and works closely with leading experts in the field, including higher education institutions** (the Technical University of Liberec, the Czech Technical University in Prague, etc.).

We use the most up-to-date machines for the manufacture of our products, employing the principles of lean production. **Products are manufactured in the shortest possible time while maintaining maximum materials and design quality.** LICON s.r.o. is a certified ISO 9001 Quality Management supplier. Our products are manufactured and tested according to ČSN EN 442 and ČSN EN 16430 standards. CE marking indicates that LICON convectors conform to the conditions set out in the Declaration of Performance in accordance with Regulation No. 305/2011 of the European Parliament and of the European Council, and further confirmed by notified authority No. 1015, the Engineering Test Institute, Brno.

KORADO a.s.

We are a dynamic Czech company with a multinational institutional shareholder and we belong to the leading world manufacturers of steel radiators. **The quality of our radiators has been verified during the 60-year history by more than 30 million customers worldwide.** Our philosophy is to offer a complete heating solution and satisfy the requirements of even the most demanding customers.

Our core product range is steel panel radiators RADIK, towel rail radiators KORALUX, design radiators KORATHERM and a complete range of KORADO convectors. We are constantly extending our product range with new radiator models and also with completely new technologies and products. **This trend has been confirmed by a successful acquisition of the company LICON HEAT, s.r.o., thanks to which our product range has been extended with a complete range of floor, bench, wall and special convectors.** Another new project is the launch of local ventilation and heat recovery units, which will significantly extend the product portfolio of our company.

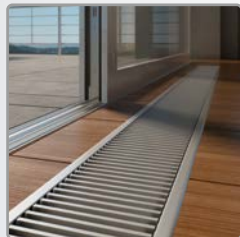


Quality for over 55 years



1968

The first LIKOV **steel convectors** were **manufactured** in Liberec in 1968.



1995

Product portfolio modernisation. **Production of the first trench heaters.**



2004

Comprehensive transformation of the company, **replacing the original LIKOV name to LICON HEAT s.r.o.**



2013

LICON HEAT s.r.o. acquired by KORADO.



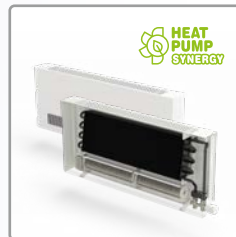
2020

New generation of KORAFLEX trench heaters



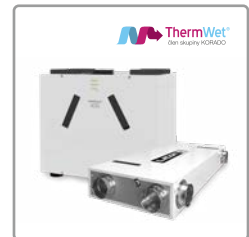
2022

The KORALINE free-standing convectors portfolio was significantly expanded to include new types, focusing on safety, design and high performance.



2023

The development of wall-mounted KORAWALL convectors with forced convection has expanded the portfolio to include units achieving high efficiency even at low temperature gradients.



2024

Change of name to LICON s.r.o., merger with the company ThermWet and production start of VENTBOX heat recovery units.



2025

Radon protection system – an effective solution against hazardous radon using controlled VENTBOX ventilation



...

Under the LICON s.r.o. brand, we will continue to improve, develop and offer quality products in the areas of heating, cooling and ventilation.





Cover grilles

Design grilles and frames offer solutions for modern as well as technically demanding interiors. The wide range of designs makes it possible to adapt the appearance to architectural requirements while ensuring high durability even under intensive use.

Higher heating and cooling output

Convectors with forced convection achieve high heating and cooling performance and ensure a stable, comfortable indoor climate. This increases user comfort and contributes to energy savings even under demanding conditions.

Tailor-made project solution

From the wide range of design modules, an individual custom version of trench heaters can be put together quickly and easily to measure.

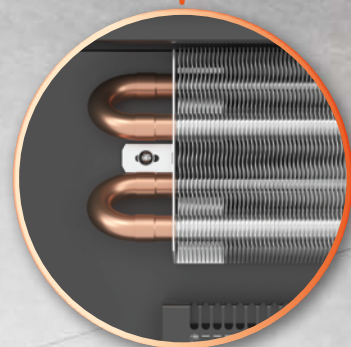


KORAFLEX – Trench heaters

- Natural convection
- Forced convection
- Fully electric

Light cooling

Energy-efficient light cooling with floor convectors – without condensation. It supports the heat pump's higher seasonal efficiency and contributes to greater indoor comfort.





Heat pump synergy

Convectors with a fan bearing this marking are ideally suited for heating buildings in combination with heat pumps, condensing boilers, or solar systems.



Easy regulation

A wide selection of room thermostats is available in various designs and colour options. This makes it easy to match them to the interior and adapt them to the user's individual requirements.

Higher-performance heat exchanger

The specially developed heat exchanger is the heart of every convector and ensures high heating output. It is available in two versions – Economic without surface treatment and Exclusive with black lacquer finish RAL 9005 for increased durability and a premium appearance.

Universal application

Suitable for high-temperature and low-temperature heat sources.

Broad portfolio

A wide selection of design and size variants ensures optimal solutions for modern interiors, large glazed areas, and demanding commercial buildings where higher heating output is required.

KORAFLEX

TRENCH HEATERS WITH NATURAL CONVECTION



- 897 standard sizes
- 23 standard lengths
- 4 model lines

- Heat output up to 3 480 W
- 16 standard grilles
- Design solution options

KORAFLEX Optimal FKO



with natural convection

Our widest range of trench heaters. Available in Economic and Exclusive versions, which may be fitted with the entire range of grilles and frames.



KORAFLEX Thin FKT



with natural convection

Trench heater with the lowest unit height 6 cm. This model is particularly suited to interiors with low floor depth. Thin trench heaters may only be fitted with Thin grilles and Thin frames. Available in Economic and Exclusive versions.



KORAFLEX Basic FKB



with natural convection

Economic model suitable for design solutions. Manufactured from non-lacquered galvanised steel.

KORAFLEX Pool FKP



with natural convection

For humid environments, manufactured from AISI 316 stainless steel finished with hem, RAL 9006 grey lacquered heat exchanger.



KORAFLEX

TRENCH HEATERS WITH FORCED CONVECTION



- 180 standard sizes
- 12 standard lengths
- 3 model lines
- Heat output up to 13 435 W
- Cooling output up to 1 035 W
- 20 standard grilles
- Safe regulation guaranteeing precise fan rotation and declared output
- 24 V DC or 230 V AC regulation
- Design solution options



KORAFLEX Pool-V FVP



with forced convection

Model line for humid environments. Made of AISI 316 stainless steel, with a sloping base and a dividing partition as protection against flooding. The swimming pool model may be fitted with an aluminium grille. Pool trench heaters are finished with hems replacing frames.



Unsuitable for salt water pools.



KORAFLEX Optimal-V FVO



with forced convection

Our widest range of 24 V DC powered trench heater models with forced convection. Available in Economic and Exclusive versions, fitted with RAL 9005 black lacquered heat exchangers. The KORAFLEX Optimal-V range may be fitted with the entire range of grilles.



KORAFLEX Energy FVE



with forced convection



Derived from the Optimal-V range, extended by 20 cm, housing electrical regulation and 230 V AC connection. Suitable for dry environments for heating only. Installation of the device must be carried out by persons with relevant electrotechnical qualifications. Proper inspection and testing of the electrical installation must be carried out prior to commissioning.

KORAFLEX HEATING AND COOLING

TRENCH HEATERS WITH FORCED CONVECTION



- 17 standard sizes
- 14 standard lengths
- 2 model lines

- Heat output up to 10 745 W
- Cooling output up to 2 180 W
- Design solution options

KORAFLEX Variant F2V



model, heating or cooling
2-pipe system

For heating or cooling. Achieves high heating and cooling performance. The F2V model is fitted with a stainless steel condensation drainage canal.

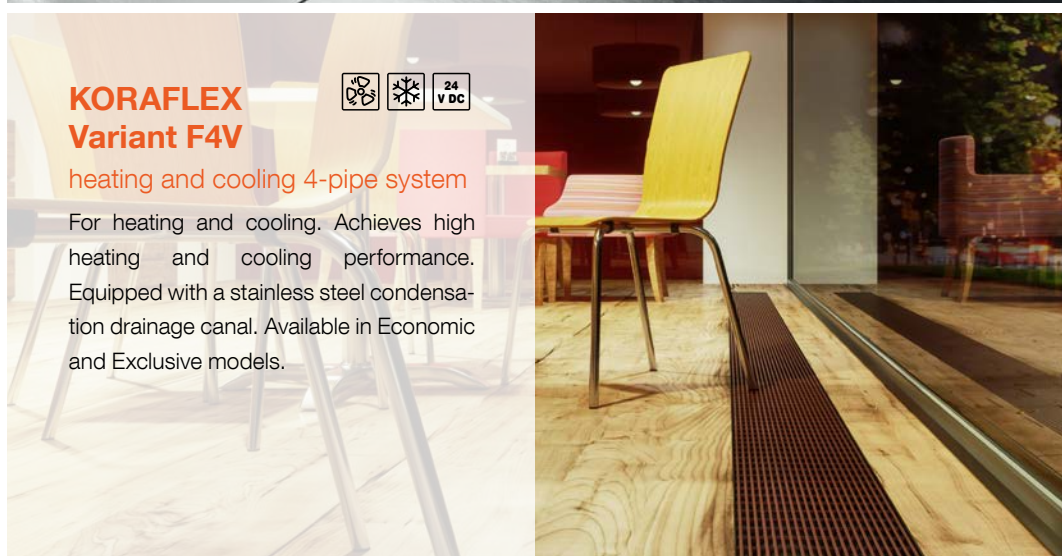


KORAFLEX Variant F4V



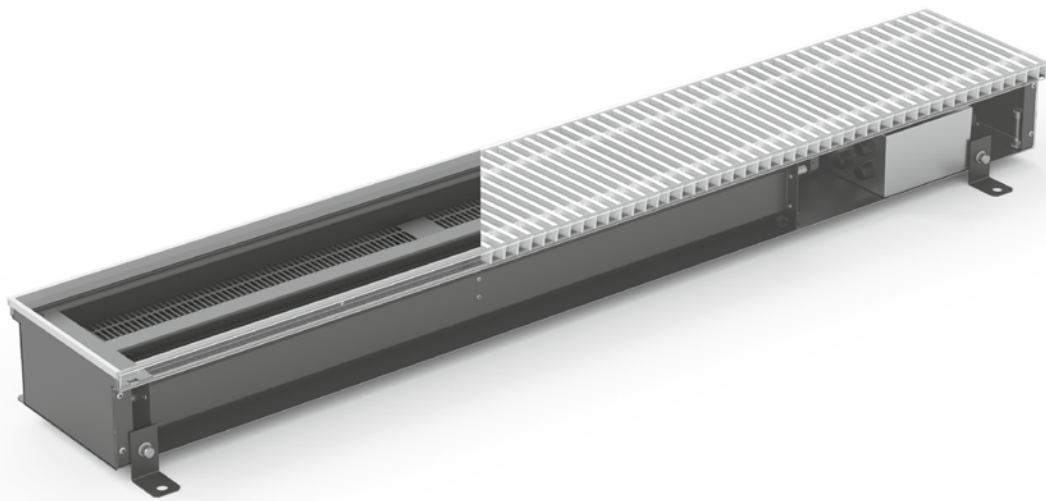
heating and cooling 4-pipe system

For heating and cooling. Achieves high heating and cooling performance. Equipped with a stainless steel condensation drainage canal. Available in Economic and Exclusive models.



KORAFLEX FULLY ELECTRIC

TRENCH HEATERS ARE FULLY ELECTRIC AND REQUIRE NO HEATING SYSTEM



- standard lengths
- 3 lengths in one width
- 1 model line
- Heat output up to 2 400 W
- Quiet, powerful and economical
- Possible as an additional assembly

KORAFLEX Amper FVA (230 V AC)

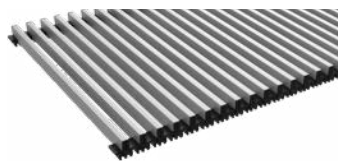
fully electric and require
no heating system

Fully electric floor convector with aluminium elox grille, which achieves high heating performance and rapid heat transfer to the room and contains – a powerful electric heat exchanger and an EC tangential fan. Reliable regulation then guarantees simple and safe operation. The trench heater has its own heating system independent from the central heating system and does not contain a heat exchanger for hot water heating. The floor convector is compact in size and is suitable wherever there is no possibility of connecting to the heating system.



KORAFLEX GRILLES

Aluminium elox



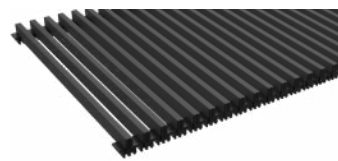
Roll-up alu/silver



Roll-up alu/dark bronze



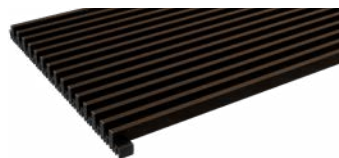
Roll-up alu/light bronze



Roll-up alu/black



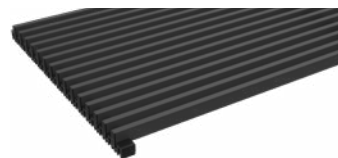
Linear alu/silver



Linear alu/dark bronze



Linear alu/light bronze



Linear alu/black

Thin – aluminium elox



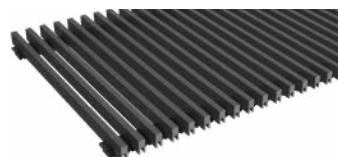
Roll-up alu/silver



Roll-up alu/dark bronze



Roll-up alu/light bronze



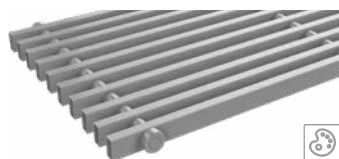
Roll-up alu/black

lowered height, only for KORAFLEX Thin FKT

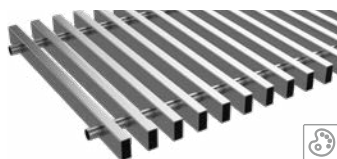
Steel



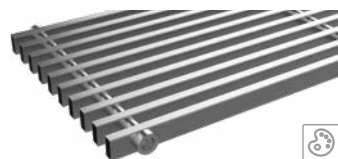
Roll-up steel, RAL 9006, lacquer



Linear steel, RAL 9006, lacquer



Roll-up/stainless steel



Linear/stainless steel

Stainless steel

Wood



Roll-up natural/lacquered beech



Roll-up natural/lacquered oak



Roll-up natural/lacquered mahogany*

Cross



Cross/steel, RAL 9006 lacquer*

Robust



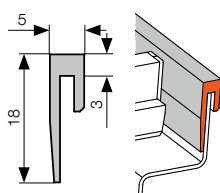
Stainless steel/steel

* upon request

KORAFLEX FRAMES

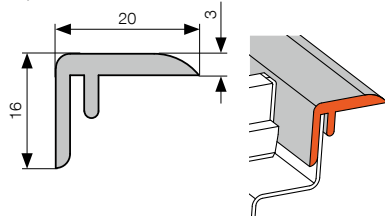
U-frame

Standard

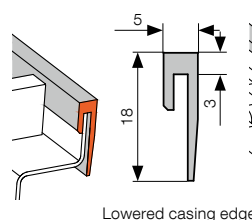


F-frame

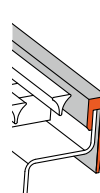
Optional



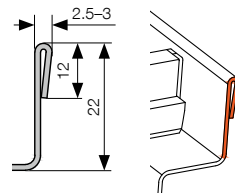
Thin frame



Cross frame



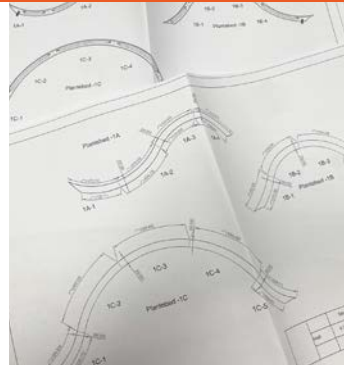
Hem



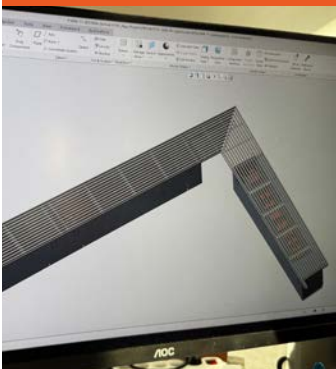
Measurements shown in mm.

PROJECT SHOWCASE

OPERA, COPENHAGEN, DENMARK

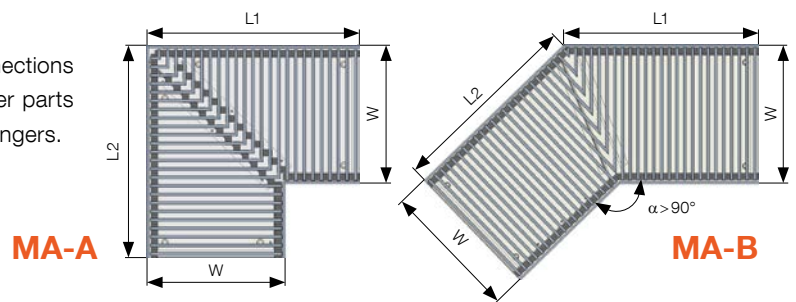


LIGHTHOUSE, AARHUS, DENMARK



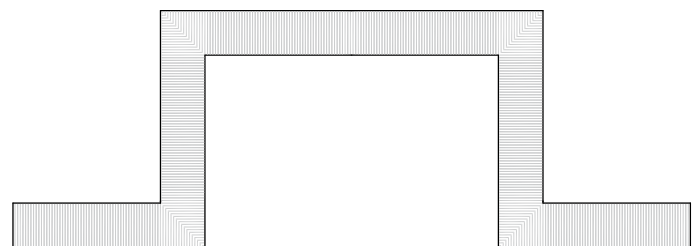
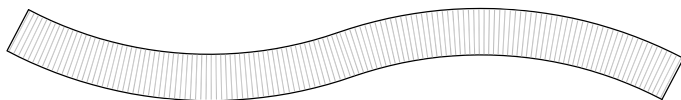
CORNER PARTS

Corner parts are the ideal solution to ensure seamless connections of KORAFLEX trench heaters in the corners of rooms. Corner parts are design elements only – they are not fitted with heat exchangers.



ANGLED AND CURVED DESIGNS

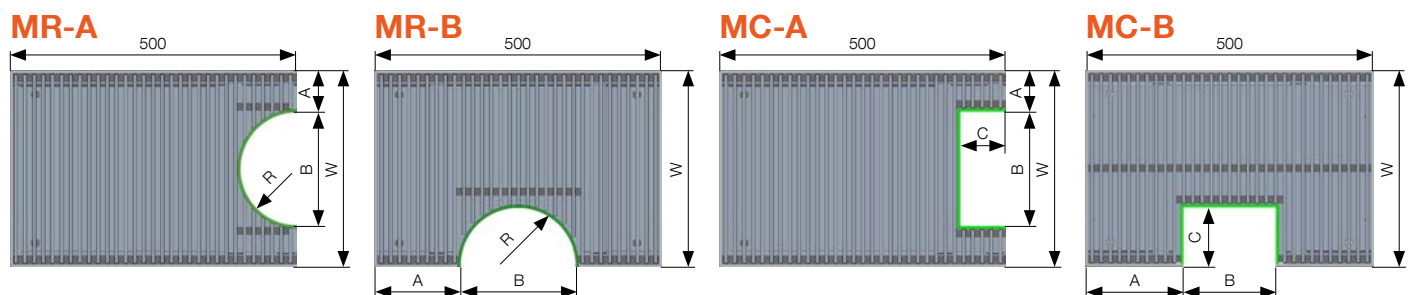
Unified style and technical design for every interior, elegant continuous convectors along the walls of an entire room, available in angled and curved designs. These elements are equipped with heat exchangers.



DESIGN MODULES

Our modular system was developed to simplify the installation of trench heaters in unusual interiors and to enable rapid processing of orders and quotations for projects. Modules are design elements only – they

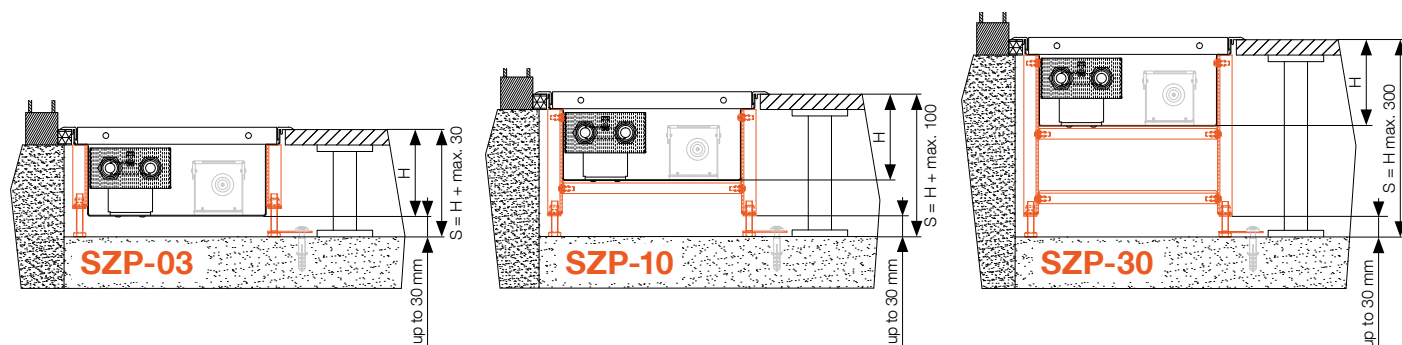
are not fitted with heat exchangers. **The wide range of design modules means quick and easy selection of trench heater systems made to suit your particular interior.**



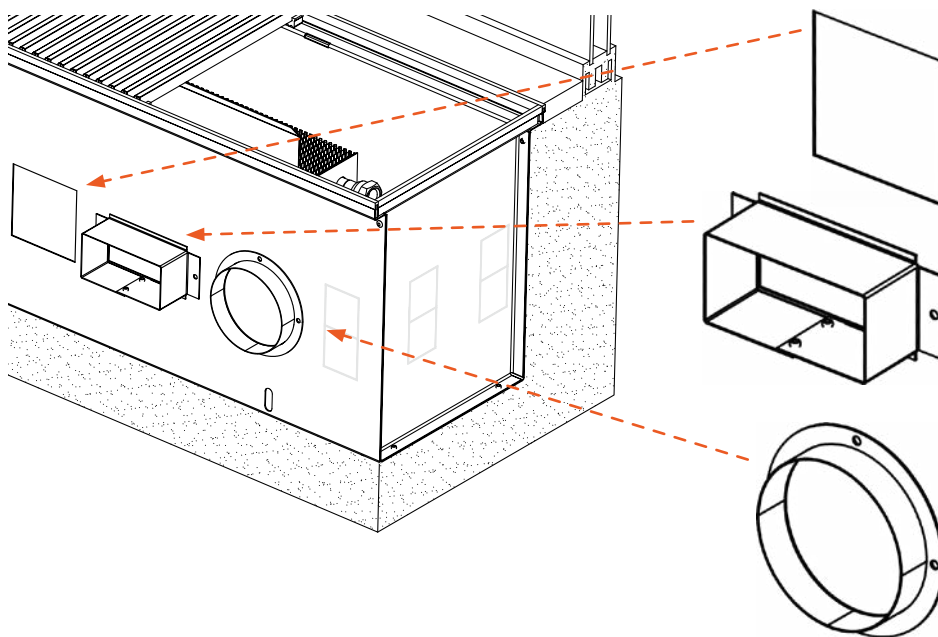
RAISED FLOOR INSTALLATIONS

Raised floor supports offer a stable and effective solution for raised floor trench heater installations. Supports are made of non-lacquered

steel, are suitable for raised floors for a depth of up to 500 mm and can be used with trench heaters with both natural and forced convection.



AIR CONDITIONING CONNECTIONS



Opening for air conditioning connection

- Optional alteration to construction
- measurements as per specifications
- quotation on request

Rectangular flange

- optional accessory
- measurements as per specifications
- quotation on request

Circular flange

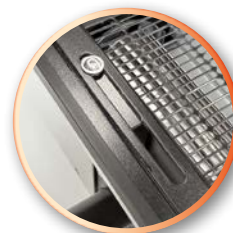
- optional accessory
- measurements as per specifications
- quotation on request



IF YOU WANT MORE...

Safe connection

Floor convectors with a fan feature an integrated and safe connection solution to the 230 V AC mains. This allows actuators or a condensate pump to be connected directly from the convector, simplifying installation and ensuring reliable system operation.



Airflow control

An integrated sliding flap enables simple and precise adjustment of the supplied airflow volume. Easy operation ensures stepless control of the airflow and efficient operation of the ventilation system – for maximum comfort.



Supports for raised floors

Supports made of galvanised steel ensure stable and efficient installation of floor convectors in raised floors with a depth of up to 500 mm. They provide a reliable and aesthetic solution for modern interiors.



Double bottom

The double-bottom solution maintains the compact dimensions of the trench heater and supports more even airflow. It helps stabilise temperature differences, reduce condensate formation, and ensure a comfortable indoor climate. The result is a more efficient and reliable operation.

Condensate tray

The condensate tray made of stainless steel is used to collect and drain the condensate produced during cooling. It is fully removable, which makes cleaning and maintenance easier. Its corrosion resistance ensures a long service life. Optionally, it can be supplemented with active condensate drainage.



Do you have another request?
Let's make it happen together!

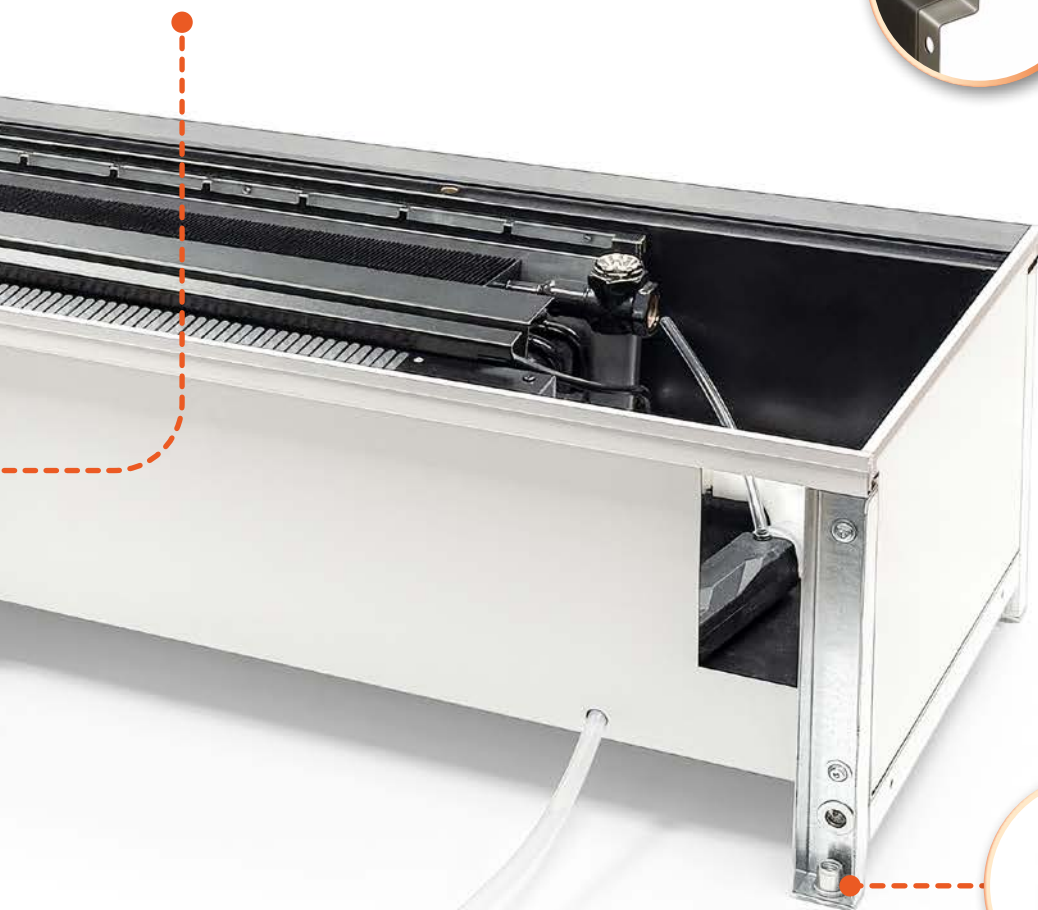
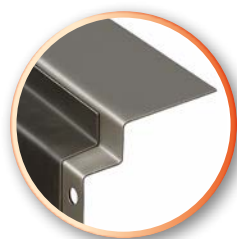


Ventilation connection

Trench heaters can be equipped with preparation for connection to a ventilation system, ensuring efficient air distribution and circulation indoors. Depending on project requirements, the connection can be implemented via a round or rectangular flange or via an opening in the construction.

Custom-made solution

For each project, we prepare detailed production documentation according to which the trench heater is designed and manufactured exactly to the individual requirements. This ensures that the resulting solution fully meets the customer's expectations as well as the room's architectural concept.



Pre-assembly of valves and flexible hoses

The convectors can be supplied with pre-assembled valves and flexible hoses, which significantly simplifies and speeds up installation on site. Before commissioning, a leak test must be carried out on site, as no manufacturer's warranty applies to this part of the installation.

Active condensate drainage

In locations where no natural drainage (slope) or direct connection to a drain is possible, active condensate drainage is a reliable solution. It enables condensate to be discharged over a distance of up to 5 m and ensures trouble-free operation even in more demanding installations.



Damping caps

The damping caps used on the supports for raised floors reduce the transmission of vibrations and suppress unwanted noise caused by minor unevenness in the floor. This ensures quiet and stable operation of the entire system.



EC fan technology (forced convection models)

Forced convection models feature energy-efficient EC fans that boost heating output with low power consumption. They also support quiet operation and smooth speed control.



Light cooling

Light cooling is only possible in the non-condensing range, i.e. above the dew point temperature, without condensate formation. It contributes to the higher seasonal efficiency of the heat pump.

Higher heating output and higher-performance heat exchanger

Convectors deliver fast and even heat distribution for ideal comfort. The specially developed Al/Cu heat exchanger with a RAL 9005 coating provides higher output and a premium look.

Design and colour finish

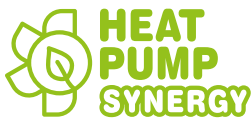
Two casing options (Standard/Line) make it easy to match the interior and project requirements. The casing can be custom lacquered in RAL shades for a uniform, aesthetic look.



KORAWALL – Wall-mounted convectors

- Natural convection
- Forced convection
- For renovations





Suitable for low-temperature heat sources and heat pumps

High efficiency is achieved even with small temperature differentials. Optimised for heat pumps, and also compatible with condensing boilers or solar systems.



Low and safe surface

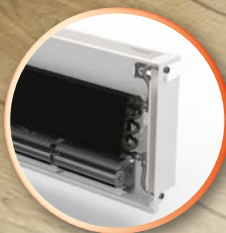
KORAWALL features a very low and safe surface temperature. It is therefore suitable for spaces with higher demands on safety and comfort.

Precise regulation

Thermostat control provides stepless fan speed adjustment in response to temperature changes. The result is a stable and comfortable indoor climate.

Individual heat consumption measurement

The convector can be equipped with an integrated meter for individual consumption recording, especially in apartment buildings. This keeps energy use and costs under control.



Renovation variant (1:1 radiator replacement, 50 cm connection spacing)

A special version enables easy replacement of the original radiator without structural modifications. Selected models allow 1:1 replacement thanks to 50 cm connection spacing for fast installation with minimal alterations.

**Want more? Do you have another request?
Let's make it happen together!**

KORAWALL

WALL-MOUNTED CONVECTORS WITH NATURAL AND FORCED CONVECTION



- 89 standard sizes
- 7 model size ranges
- Heat output up to 7 676 W
- Cooling output up to 1 288 W
- Heating and cooling functions
- Models with forced and natural convection

KORAWALL Optimal WKO



with natural convection

Wall-mounted convectors are a proven solution for residential spaces as well as commercial areas. Despite their compact dimensions, they deliver high heating output and at the same time feature a very low and safe surface temperature. They allow easy installation, straightforward maintenance and low energy consumption. The casing can be lacquered in shades from the RAL colour palette.



KORAWALL Optimal-V WVO, Pool-V WVP



with forced convection

Designed for low-temperature heating systems, with high efficiency ensured even at very low temperature differentials. These wall convectors can also be used in summer for supplementary cooling of rooms without condensate formation.

KORAWALL Power WKW



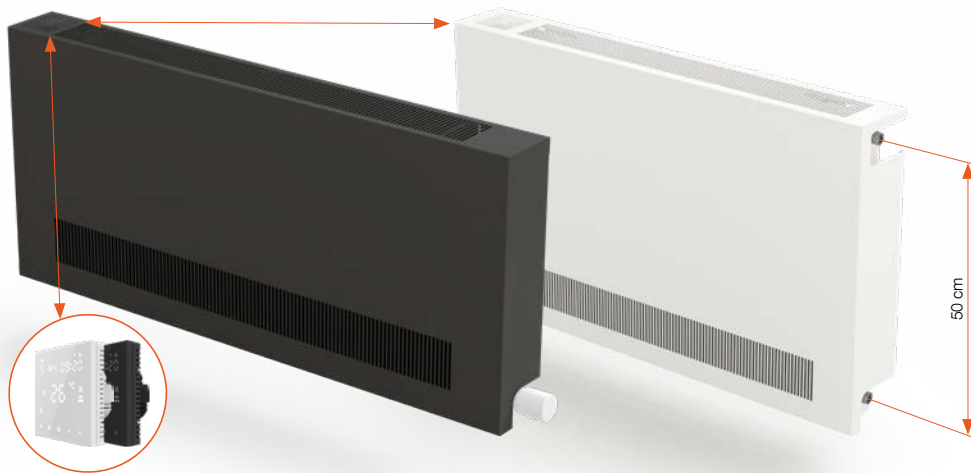
with natural convection

KORAWALL Power is a version designed for higher performance requirements. It features a high-efficiency heat exchanger that enables even higher heating output – while still maintaining compact dimensions and a safely low surface temperature. It allows easy installation, straightforward maintenance and low energy consumption. The casing can be lacquered in RAL shades.



KORAWALL

WALL-MOUNTED CONVECTORS WITH FORCED CONVECTION



- Thermostat with LED display
- 50 cm connection spacing – 1:1 replacement for existing radiators (WRT, WRO)
- High performance even at low temperature gradients
- Cooling option in the non-condensing range
- Quiet and energy-efficient fan with speed control
- Modern design and universal application

KORAWALL Optimal-R WRO, Therm-R WRT

Wall-mounted heating unit
suitable for renovations

A modern wall-mounted heating unit with a fan, ideal for renovations. It offers a 50 cm connection spacing, a built-in thermostat, and simple installation with pre-assembled stainless steel flexible hoses. The unit is suitable for low-temperature heating.

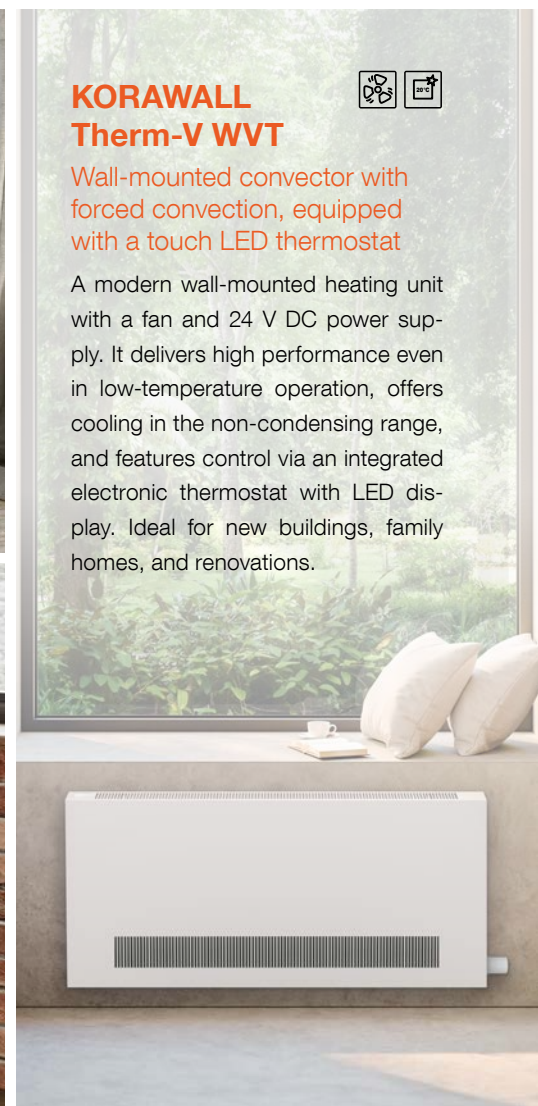


IDEAL FOR RENOVATION

KORAWALL Therm-V WVT

Wall-mounted convector with
forced convection, equipped
with a touch LED thermostat

A modern wall-mounted heating unit with a fan and 24 V DC power supply. It delivers high performance even in low-temperature operation, offers cooling in the non-condensing range, and features control via an integrated electronic thermostat with LED display. Ideal for new buildings, family homes, and renovations.





230
V AC

Ideal for heat pumps

High efficiency is achieved even with low temperature differentials, making them suitable for low-temperature heat sources. They can be used with heat pumps, condensing boilers and solar systems.



KORALINE – Free standing convectors

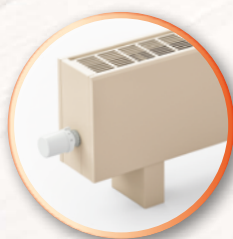
- Natural convection
- Forced convection
- Bench convectors with a wooden top cover

Low energy consumption

The convectors are designed with low electrical power consumption in mind. This helps keep operating costs under control.

Low surface temperature

KORALINE is designed with a low surface temperature for safe and comfortable operation. It is suitable for residential, apartment and office buildings.



Design and performance

KORALINE convectors combine an elegant appearance with high heating output. The casing can be lacquered in RAL colours; you can choose a version with a separate cover grille or with a safety outlet grille integrated directly into the casing.



Timeless design

The top-cover design combines an elegant look with practicality and offers multiple top cover options; it is suitable not only for heating, but also for seating and relaxing. For humid areas, a design is available with an AISI 316 stainless steel casing and a top cover with a special surface finish.

Flexibility

A wide range of sizes makes it easy to adapt the solution to the space and the project. Brackets are also available for wall mounting or floor installation.

Higher output

For higher output, a high-performance heat exchanger with double fin area is available for efficient heat transfer. This allows higher heating capacities to be achieved.

Safety Design

A Safety design version is available, for example with a chamfered front edge for safer use in public areas. An optional heat exchanger safety lock can be added to secure it in position.

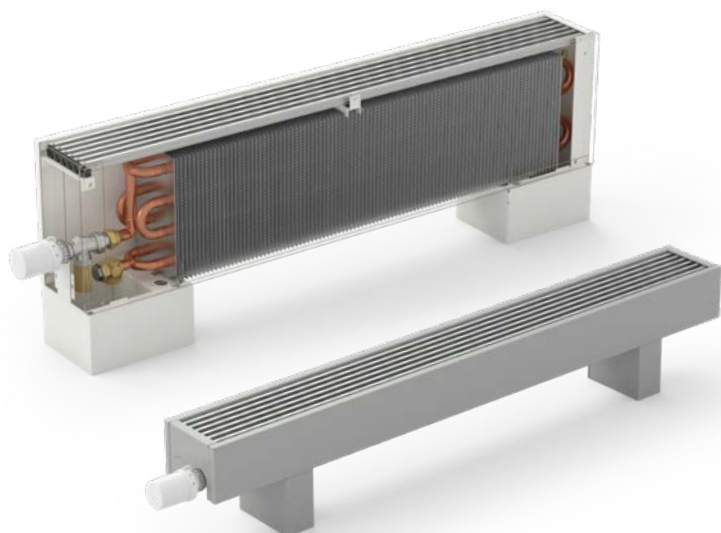
Energy-efficient fans

KORALINE with forced convection features energy-efficient, high-performance fans and a low-power motor. The result is high efficiency even during low-temperature operation.

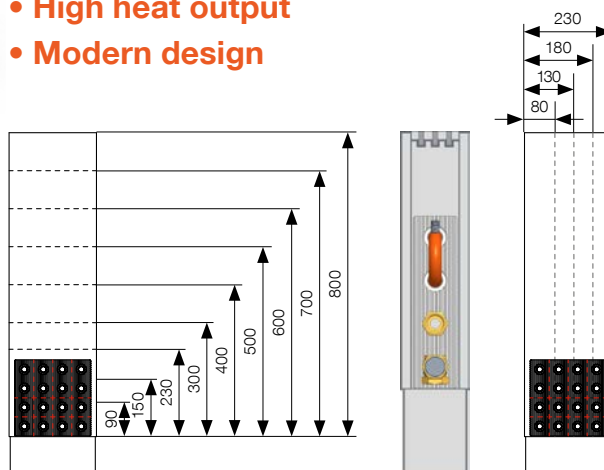
Want more? Do you have another request?
Let's make it happen together!

KORALINE

FREE-STANDING CONVECTORS WITH NATURAL CONVECTION AND DESIGN GRILLE



- 756 standard sizes
- 16 standard lengths
- 2 model lines
- Heat output up to 7 400 W
- Floor or wall installation
- Low surface temperature
- High heat output
- Modern design



KORALINE Optimal LKO



with natural convection

It is characterised by design and output. They are fitted with a high-quality silver elox aluminium grille. Given the diverse portfolio and the optimal output, convectors in this model line are ideal for heating private houses, residential and office buildings.



KORALINE Power LKW



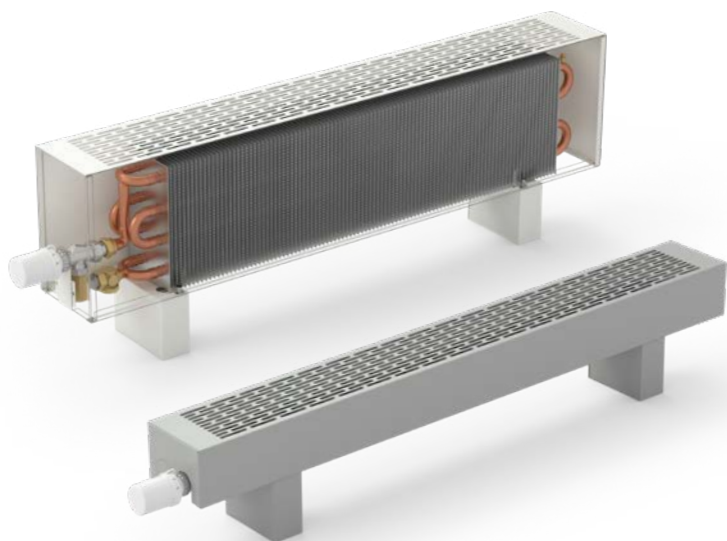
with natural convection

It is the most extensive model line and features a high-performance heat exchanger with double the standard area of uniquely shaped fins. This model line provides high heat output while maintaining a modern design. Convectors are fitted with a high quality silver elox aluminium grille.

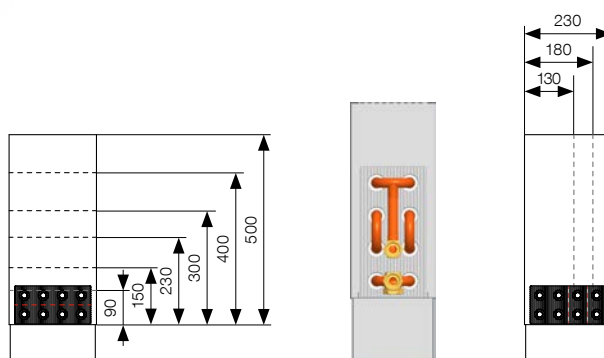


KORALINE

FREE-STANDING CONVECTORS WITH NATURAL CONVECTION AND PERFORATED SAFETY GRILLE



- 480 standard sizes
- 16 standard lengths
- 2 model lines
- Heat output up to 7 400 W
- Floor or wall installation
- Low surface temperature
- High heat output
- Perforated safety grille



KORALINE Basic LKB



with natural convection

Is the standard version of our low surface temperature free-standing convectors. In this model line, the safety grille is perforated directly in the galvanised steel casing. Optimal outputs and a favourable price make KORALINE Basic the ideal model line for heating private homes, apartment complexes and office buildings.



KORALINE Combi LKC



with natural convection

KORALINE Combi LKC models house a high-performance heat exchanger with double the standard area of fins. A safety grille is an integral part of the casing – it is perforated directly in the galvanised steel casing body. Thanks to their compact dimension, maximal output, and low surface temperature, the KORALINE Combi LKC model is suitable for heating a variety of interiors starting from small family houses up to large public premises.

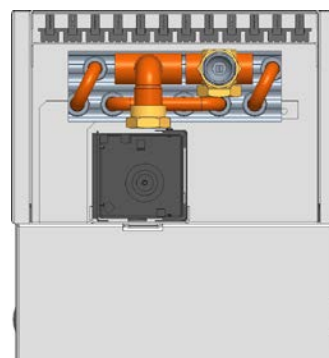
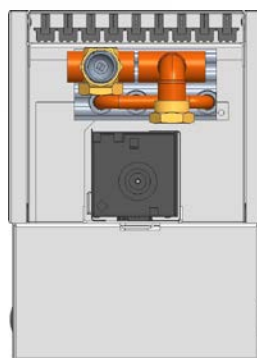


KORALINE

FREE-STANDING CONVECTORS WITH FORCED CONVECTION

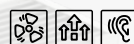


- 12 standard sizes
- 6 standard lengths
- 2 model lines
- Heat output up to 6 061 W
- Floor installation
- Low surface temperature
- Version with forced convection
- High heat output



KORALINE Optimal-V LVO

with forced convection



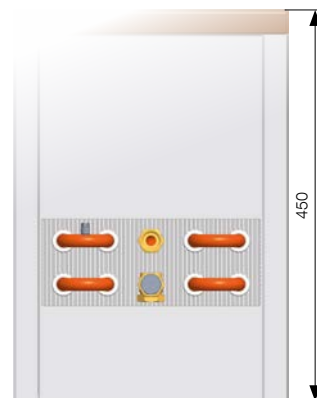
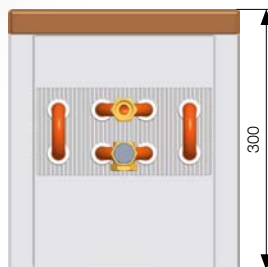
An exclusive version of free-standing convectors fitted with economical 24 V DC fans with minimum power input. Achieves very high performance even with low-temperature gradients. The model is available, equipped with aluminium grilles.

KORALINE

BENCH CONVECTOR WITH WOODEN BENCH TOP



- 12 standard sizes
- 6 standard lengths
- 2 model lines
- Heat output up to 3 525 W
- Solid wood bench tops
- 3 bench top wood options: beech, oak or American walnut
- Version for damp/humid environments
- High heat output
- Sophisticated design



KORALINE Optimal LDO

with natural convection

Bench convectors fitted with beech, oak or American walnut bench tops. Manufactured from RAL 9016 white lacquered galvanised sheet steel. Designed for dry environments in halls or administrative buildings. Built to bear static weight and suitable for sitting.



KORALINE Pool LDP

with natural convection

A proven smart combination of design, performance and characteristics. KORALINE Pool LDP is fitted with RAL 9016 white lacquered AISI 316 stainless steel casing. Where fitted with American walnut bench tops, this model is suitable for installation in environments with increased humidity.



KORABASE

HEAT EXCHANGERS



- 168 standard sizes
- 12 standard lengths
- 7 size ranges
- Heat output up to 5 500W
- Design solution options
- Counter-flow and single-stream connections

KORASPACE

FACADE CONVECTORS



- Optional colours available according to the RAL colour chart
- Design solution options

KORABASE Economic BVE, Exclusive BVX



KORABASE heat exchangers are suitable for individual installations, especially in spaces where uniformity of interior design materials is essential. Heat exchangers are manufactured from copper tubes and aluminium fins. The Exclusive version is finished with a black lacquer coating in RAL 9005.



KORASPACE FK with natural convection



Facade convectors are an ideal and effective solution for buildings with large all-glass facades, where the transmission of cold air during the winter months may significantly affect the microclimate of the interior. KORASPACE facade convectors are installed directly onto the facade, thereby preventing the direct transmission of cold air into the interior of the building. Warm air rising from the convector mixes with

descending cool air to create a thermal barrier, providing greater comfort without causing condensation on the surface of the glass.

- Excellent controllability and rapid temperature rise
- No transfer of heat to the exterior side of the facade
- Space available for additional, parallel distribution systems



VENTBOX

VENTILATION UNITS



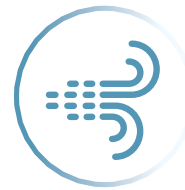
Suitable for all types of buildings

E.g. apartments, houses, schools and developer projects. Central heat recovery units with heat recovery for all building types.



Fresh air free of dust and smog

The system can effectively filter the air and remove allergens, pollen, germs and viruses, among other things. This keeps the air in your home healthy and clean.



Optional intensive extraction

The units feature a BOOST function for faster air extraction for 1–20 minutes, for example during cooking or after increased activity.



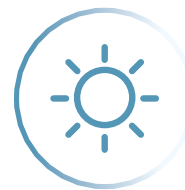
Removal of moisture

Heat recovery systems feature an integrated system for removing excess moisture from the home, contributing to a more comfortable and healthier indoor environment.



Efficient exhaust air drainage

The units achieve high efficiency in removing exhaust air, helping to maintain optimum indoor air quality and reduce the risk of moisture and mould.



Summer features

The units compare indoor and outdoor air temperatures and automatically control the bypass damper. This prevents the outdoor air from being warmed; the bypass can also be operated manually.



For ceiling, wall or floor

The units can be installed freely, offering flexibility in placement and easy integration into different room configurations as standard.



Controlled via mobile app

The units can be controlled and monitored via a mobile app, allowing you to conveniently adjust the settings to suit your needs.



Low consumption

The units are designed for energy efficiency and use very little electricity, helping you reduce operating costs.



Radon-free living

The units can be equipped with a radon sensor that continuously monitors the radon concentration in the home and enables an automatic response.



VENTBOX

HEAT RECOVERY UNITS



- Centralised and decentralised configurations
- Optimum, Premium, Comfort, Radon variants
- For all building types
- High airflow rate
- Mounting options: ceiling, wall, or floor
- Fresh air without allergens, pollen, CO₂
- Control via web interface

VENTBOX 150 Thin VENTBOX 200 Thin

90%
Φ

Centralised heat recovery units for apartments and small houses up to 150 m²

- Economy, Optimum, Premium, Radon
- Possibility of fitting with an enthalpic counterflow heat exchanger
- M5 ePM10 filters or F7 ePM1

VENTBOX 800 VENTBOX 800 Public

88%
Φ

Centralised and decentralised heat recovery units for the family houses with an indoor pool, administrative buildings, schools, libraries, cafes up to 600 m²

- Premium, Radon
- Possibility of fitting with an enthalpic counterflow heat exchanger
- F7 filters or F7 carbon EPM1 filters

VENTBOX 300 VENTBOX 400

95%
Φ

Centralised heat recovery units for apartments and family houses up to 300 m²

- Optimum, Premium, Comfort, Radon
- Possibility of fitting with an enthalpic counterflow heat exchanger
- M5 ePM10, F7 filters or F7 carbon filters



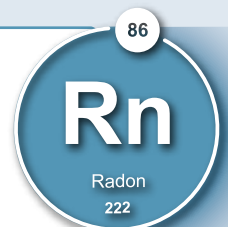
RADON PROTECTION SYSTEM



Effective protection against radon

PATENTED*

Radon is a naturally occurring, invisible radioactive gas produced by the decay of uranium, thorium, and radium found in soil, rocks, and underground water. It is colourless, tasteless, and odourless, making it undetectable without special instruments.



Radon accumulates primarily in enclosed spaces such as homes, schools, kindergartens, and offices, where it can reach dangerous concentrations. Its presence indoors is hazardous in the long term, so it is important to measure radon concentrations in buildings and take measures to reduce its infiltration.

Radon and VENTBOX ventilation units

- Heat recovery units VENTBOX are an effective solution for ensuring a healthy environment in homes and workplaces. These units can be equipped with a radon sensor that automatically monitors the indoor radon concentration.



Central heat recovery units are key elements of modern living and working environments.

This innovative technology provides efficient ventilation while minimising energy losses. These units offer the possibility of installing a radon sensor, which is particularly relevant in high radon concentrations. This innovative feature allows for continuous monitoring, providing users with an accurate overview of the levels of this radioactive gas in their living environment.



* patented solution undergoing Czech regulatory approval process



LICON s.r.o.
 Svárovská 699, Průmyslová zóna Sever, 463 03 Stráž nad Nisou, Czech Republic
 e-mail: info@licon.cz, www.licon.cz, www.licon-heat.com
 Ev. č. 01-2026-EN